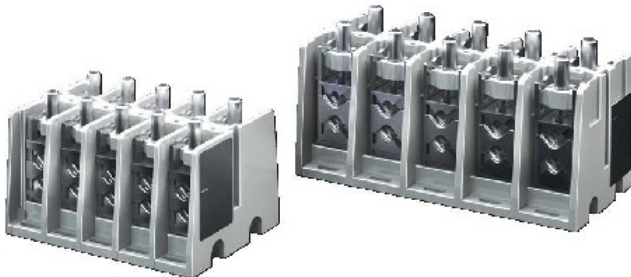


ISV connection terminal block 5-pin, 250A - Busbar system for distribution boards SV 9666.340



Rittal
SV 9666.340
9666340
4028177676329 EAN/GTIN

195,04 USD excl. VAT**
plus shipping



15-16 days* (USA)

Power distribution block (rail mount) Number of poles 5, Connection type Screwing, Mounting method Screw, Number of connections total 10, Number of connections < 6 mm² 0, Number of connections 10 mm² 0, Number of connections 16 mm² 0, Number of connections 25 mm² 0, Number of connections > 25 mm² 0

YOUR ADVANTAGES



WORLDWIDE TRADE
Corporate video eibmarkt®



99% CUSTOMER SATISFACTION
> 500,000 customers worldwide



DHL TRACK & TRACE
Shipment tracking



COMPLAINTS HANDLING
Obliging and 100% safely



25 YEARS OF EXPERIENCE
In worldwide mail order



ORDER LIVE CHAT
With order history



SHORT DELIVERY TIME
Warehousing



REFUND
Within 14 days



DATA PROTECTION
Guarantee

© 1997-2024 eibmarkt.com GmbH - Kemmlerstrasse 1 - 08527 Plauen - Germany

eibabo® and **eibmarkt®** are registered trademarks of EIBMARKT® GmbH holding company (www.eibmarkt.de). eibabo® is a company of eibmarkt.com GmbH. eibmarkt.com GmbH is a 100% subsidiary of EIBMARKT® GmbH holding.

* Note on delivery time: Day = Monday to Friday, no public holiday in Bavaria or Saxony. Goods are also delivered on Saturdays (DHL).

** Payment methods may vary from country to country. All prices plus shipping and excluding customs duties or other additional costs (import sales tax) for deliveries outside the EU.

*** Savings compared to RRP = the manufacturer's recommended retail price. RRP is the price recommended to retailers by the manufacturer, importer or wholesaler as a resale price to the customer. The RRP is also referred to as the list price and is defined as the highest possible price that a buyer would pay for a specific product before any discounts (Source of gross list prices: Germany).

eibabo® the Smart Home technology shop
eibabo® electronics cheap online order
eibabo® electric appliances buy online

